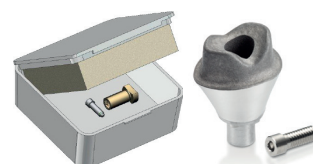


LaserAbutments™ and LaserBridges™ supported implants and pin kits

Engaging pin kits for LaserAbutments™

Each kit contains one model pin (in PEEK compatible with optical and contact scanners) and one screw.

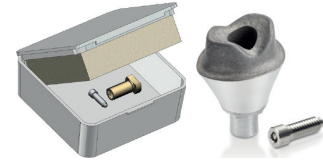


LaserAbutments™

	Implant System	Pin type	Scan Pin Kit	3Shape Material File	Inscise CAD	RDS
			Abutment			
Biomet 3i™	Certain® 3.4	VV	A-5495-4385 (Engaging Pin Kit VV)	✓	✓	✓
	Certain® 4.1	WW	A-5495-4386 (Engaging Pin Kit WW)	✓	✓	✓
	Certain® 5.0			✓	✓	✓
	Certain® 6.0			✓	✓	✓
	External Hex 3.4	UU	A-5495-4384 (Engaging Pin Kit UU)	✓	✓	✓
	External Hex 4.1	BB	A-5495-4367 (Engaging Pin Kit BB)	✓	✓	✓
	External Hex 5.0			✓	✓	✓
	External Hex 6.0			✓	✓	✓
Straumann®	Bone Level NC	AD	A-5495-4391 (Engaging Pin Kit AD)	✓	✓	✓
	Bone Level RC	AE	A-5495-4392 (Engaging Pin Kit AE)	✓	✓	✓
	Tissue Level RN + synOcta® abutment	AG	A-5495-4394 (Engaging Pin Kit AG)	✓	✓	✓
	Tissue Level WN + synOcta® abutment	AH	A-5495-4395 (Engaging Pin Kit AH)	✓	✓	✓
Nobel Biocare®	NobelReplace™ NP	DD	A-5495-4369 (Engaging Pin Kit DD)	✓	✓	✓
	NobelReplace™ RP	EE	A-5495-4370 (Engaging Pin Kit EE)	✓	✓	✓
	NobelReplace™ WP	FF	A-5495-4371 (Engaging Pin Kit FF)	✓	✓	✓
	NobelReplace™ 6.0	GG	A-5495-4372 (Engaging Pin Kit GG)	✓	✓	✓
	NobelActive™ NP	AJ	A-5495-4396 (Engaging Pin Kit AJ)	✓	✓	✓
	NobelActive™ RP	AK	A-5495-4397 (Engaging Pin Kit AK)	✓	✓	✓
	Brånemark System® NP	HH	A-5495-4373 (Engaging Pin Kit HH)	✓	✓	✓
	Brånemark System® RP	AA	A-5495-4366 (Engaging Pin Kit AA)	✓	✓	✓
Brånemark System® WP	CC	A-5495-4368 (Engaging Pin Kit CC)	✓	✓	✓	
MIS®	Internal Hex NP	BC	A-5495-6752 (Engaging Pin Kit BC)	✗	✓	✓
	Internal Hex SP	BD	A-5495-6753 (Engaging Pin Kit BD)	✗	✓	✓
	Internal Hex WP	BE	A-5495-6754 (Engaging Pin Kit BE)	✗	✓	✓
	Conical Connection SP	BF	A-5495-6759 (Engaging Pin Kit BF)	✗	✓	✓
	Conical Connection WP	BG	A-5495-6758 (Engaging Pin Kit BG)	✗	✓	✓

Engaging pin kits for LaserAbutments™ (cont...)

Each kit contains one model pin (in PEEK compatible with optical and contact scanners) and one screw.



	Implant System	Pin type	Scan Pin Kit	3Shape Material File	incise CAD	RDS
			Abutment			
TBR	Morse Taper M 3.2	BH	A-5495-6755 (Engaging Pin Kit BH)	x	✓	✓
	Morse Taper M 3.9	BJ	A-5495-6756 (Engaging Pin Kit BJ)	x	✓	✓
	Morse Taper M 4.7	BK	A-5495-6757 (Engaging Pin Kit BK)	x	✓	✓
	Internal Octagon 3.5	BL	A-5495-6751 (Engaging Pin Kit BL)	x	✓	✓
	Internal Octagon 4.0			x	✓	✓
	Internal Octagon 5.0			x	✓	✓
AstraTech	OsseoSpeed™ TX 3.5/4.0	AT	A-5495-4311 (Engaging Pin Kit AT)	x	✓	✓
	OsseoSpeed™ TX 4.5/5.0	AU	A-5495-4312 (Engaging Pin Kit AU)	x	✓	✓
Zimmer	Tapered Screw-Vent 3.5	BT	A-5495-6766 (Engaging Pin Kit BT)	x	x	✓
	Tapered Screw-Vent 4.5	BU	A-5495-6767 (Engaging Pin Kit BU)	x	x	✓
	Tapered Screw-Vent 5.7	BV	A-5495-6768 (Engaging Pin Kit BV)	x	x	✓
BioHorizons	External 3.5	BW	A-5495-6769 (Engaging Pin Kit BW)	x	✓	✓
	External 4.0	BX	A-5495-6770 (Engaging Pin Kit BX)	x	✓	✓
	External 5.0	BY	A-5495-6771 (Engaging Pin Kit BY)	x	✓	✓
	External 6.0			x	✓	✓
	Internal 3.5	BT	A-5495-6766 (Engaging Pin Kit BT)	x	✓	✓
	Internal 4.5	BU	A-5495-6767 (Engaging Pin Kit BU)	x	✓	✓
	Internal 5.7	BV	A-5495-6768 (Engaging Pin Kit BV)	x	✓	✓

Non-engaging pin kits for LaserBridges™

Each kit contains two model pins (stainless steel only compatible with contact scanners) and two screws (where applicable).



LaserBridges™

	Implant System	Pin type	Scan Pin Kit	3Shape Material File	incise CAD	RDS
			Bridge			
Biomet 3i™	Certain® 3.4	VV	A-5495-3385 (Implant Bridge Pin Kit VV)	✗	✓	✓
	Certain® 4.1	WW	A-5495-3386 (Implant Bridge Pin Kit WW)	✗	✓	✓
	Certain® 5.0			✗	✓	✓
	Certain® 6.0			✗	✓	✓
	External Hex 3.4	UU	A-5495-3384 (Implant Bridge Pin Kit UU)	✗	✓	✓
	External Hex 4.1	BB	A-5495-3367 (Implant Bridge Pin Kit BB)	✗	✓	✓
	External Hex 5.0			✗	✓	✓
	External Hex 6.0			✗	✓	✓
	Low Profile Abutment	AF	A-5495-3393 (Implant Bridge Pin Kit AF)	✗	✓	✓
Straumann®	Bone Level NC	AD	A-5495-3391 (Implant Bridge Pin Kit AD)	✗	✓	✓
	Bone Level RC	AE	A-5495-3392 (Implant Bridge Pin Kit AE)	✗	✓	✓
	Tissue Level RN	AG-IMP	A-5495-3412 (Implant Bridge Pin Kit AG-Imp)	✗	✗	✓
	Tissue Level WN	AH-IMP	A-5495-3413 (Implant Bridge Pin Kit AH-Imp)	✗	✗	✓
	Tissue Level RN + synOcta® abutment	AG-SYN	A-5495-3394 (Implant Bridge Pin Kit AG-Synocta)	✗	✓	✓
	Tissue Level WN + synOcta® abutment	AH-SYN	A-5495-3395 (Implant Bridge Pin Kit AH-Synocta)	✗	✓	✓
	Multi-Base Straight 3.5	AW	A-5495-3409 (Implant Bridge Pin Kit AW)	✗	✗	✓
	Multi-Base Straight 4.5	AX	A-5495-3410 (Implant Bridge Pin Kit AX)	✗	✗	✓
	Multi-Base Straight 6.5	AY	A-5495-3411 (Implant Bridge Pin Kit AY)	✗	✗	✓
Nobel Biocare®	NobelReplace™ NP	DD	A-5495-3369 (Implant Bridge Pin Kit DD)	✗	✓	✓
	NobelReplace™ RP	EE	A-5495-3370 (Implant Bridge Pin Kit EE)	✗	✓	✓
	NobelReplace™ WP	FF	A-5495-3371 (Implant Bridge Pin Kit FF)	✗	✓	✓
	NobelReplace™ 6.0	GG	A-5495-3372 (Implant Bridge Pin Kit GG)	✗	✓	✓
	NobelActive™ NP	AJ	A-5495-3396 (Implant Bridge Pin Kit AJ)	✗	✓	✓
	NobelActive™ RP	AK	A-5495-3397 (Implant Bridge Pin Kit AK)	✗	✓	✓
	Brånemark System® NP	HH	A-5495-3373 (Implant Bridge Pin Kit HH)	✗	✓	✓
	Brånemark System® RP	AA	A-5495-3366 (Implant Bridge Pin Kit AA)	✗	✓	✓
	Brånemark System® WP	CC	A-5495-3368 (Implant Bridge Pin Kit CC)	✗	✓	✓
	Multi-unit Abutment NP & RP	JJ	A-5495-3375 (Implant Bridge Pin Kit JJ)	✗	✓	✓
	Multi-unit Abutment WP	KK	A-5495-3376 (Implant Bridge Pin Kit KK)	✗	✓	✓
MIS®	Internal Hex NP	BC	A-5495-7252 (Implant Bridge Pin Kit BC)	✗	✗	✓
	Internal Hex SP	BD	A-5495-7253 (Implant Bridge Pin Kit BD)	✗	✗	✓
	Internal Hex WP	BE	A-5495-7254 (Implant Bridge Pin Kit BE)	✗	✗	✓
	Multi-Unit Abutment	AF	A-5495-3393 (Implant Bridge Pin Kit AF)	✗	✗	✓
	Conical Connection SP	BF	A-5495-7255 (Implant Bridge Pin Kit BF)	✗	✗	✓
	Conical Connection WP	BG	A-5495-7256 (implant Bridge Pin Kit BG)	✗	✗	✓

Non-engaging pin kits for LaserBridges™ (cont ...)

Each kit contains two model pins (stainless steel only compatible with contact scanners) and two screws (where applicable).



	Implant System	Pin type	Scan Pin Kit	3Shape Material File	Incase CAD	RDS 1.1
			Bridge			
Dentsply	Ankylos® Balance Base Abutment C/ narrow	CE	A-5495-7277 (Implant Bridge Pin Kit CE)	x	x	✓
	Ankylos® Balance Base Abutment C/	CF	A-5495-7278 (Implant Bridge Pin Kit CF)	x	x	✓
TBR	Morse Taper M 3.2	BH	A-5495-7257 (Implant Bridge Pin Kit BH)	x	x	✓
	Morse Taper Z1-M 3.2			x	x	✓
	Morse Taper M 3.9	BJ	A-5495-7258 (Implant Bridge Pin Kit BJ)	x	x	✓
	Morse Taper Z1-M 3.9			x	x	✓
	Morse Taper M 4.7	BK	A-5495-7259 (Implant Bridge Pin Kit BK)	x	x	✓
	Morse Taper Z1-M 4.			x	x	✓
	Internal Octagon 3.5	BL	A-5495-7260 (Implant Bridge Pin Kit BL)	x	x	✓
	Internal Octagon Z1 3.5			x	x	✓
	Internal Octagon 4.0			x	x	✓
	Internal Octagon Z1 4.0			x	x	✓
	Internal Octagon 5.0			x	x	✓
	Internal Octagon Z1 5.0			x	x	✓
	Hex Conic 3.5	BM	A-5495-7261 (Implant Bridge Pin Kit BM)	x	x	✓
	Hex Conic 4.0	BN	A-5495-7262 (Implant Bridge Pin Kit BN)	x	x	✓
	Hex Conic 5.0			x	x	✓
	Conical Abutment 3.5	BP	A-5495-7263 (Implant Bridge Pin Kit BP)	x	x	✓
	Conical Abutment 4.0			x	x	✓
	Conical Abutment 5.0			x	x	✓
BioHorizons	External 3.5	BW	A-5495-7269 (Implant Bridge Pin Kit BW)	x	x	✓
	External 4.0	BX	A-5495-7270 (Implant Bridge Pin Kit BX)	x	x	✓
	External 5.0	BY	A-5495-7271 (Implant Bridge Pin Kit BY)	x	x	✓
	External 6.0			x	x	✓
	Internal 3.0	BS	A-5495-7265 (Implant Bride Pin Kit BS)	x	x	✓
	Internal 3.5	BT	A-5495-7266 (Implant Bridge Pin Kit BT)	x	x	✓
	Internal 4.5	BU	A-5495-7267 (Implant Bridge Pin Kit BU)	x	x	✓
	Internal 5.7	BV	A-5495-7268 (Implant Bridge Pin Kit BV)	x	x	✓
	Multi-Unit Abutment	AF	A-5495-3393 (Implant Bridge Pin Kit AF)	x	x	✓
AstraTech	20° UniAbutment	AB	A-5495-3389 (Implant Bridge Pin Kit AB)	x	✓	✓
	45° UniAbutment	AC	A-5495-3390 (Implant Bridge Pin Kit AC)	x	✓	✓

All brand names and product names used on this form are trade names, service marks, trade marks or registered trade marks of their respective owners.

For more information please visit www.renishaw.com/dental